

Plynové guľové kohúty / Gas ball valves

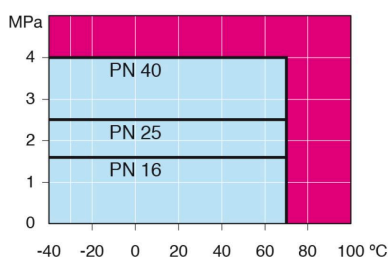
PN 25, konce príruby / príruby / flange / flange, DN 100-600, redukovaný prietok / reduced bore

| | |
|----------------------------|---------------------------------------------------------------------------------------------------------|
| Teleso/Body | DN 100-500 Ocel' / Steel, P235GH (1.0345) DN 600 Ocel' / Steel, P355 NL1 (1.0566) / GP240GH (1.0619) |
| Guľa/Ball | DN 100-600 Nerez ocel' / Stainless steel, X5CrNi18-10 (1.4301) |
| Sedlo/Ball seal | DN 100-600 PTFE+C |
| Vretno/Stem | DN 100-600 Nerez ocel' / Stainless steel, X8CrNiS18-9 (1.4305) |
| Tesnenie vretena/Stem seal | DN 100-600 NBR |
| Ovládanie/Operation | DN 100-600 ručný prevod / manual gear |
| Príruba/Flanges | EN 1092-1 Dostupné / Available PN 10, 16, 25, 40 |

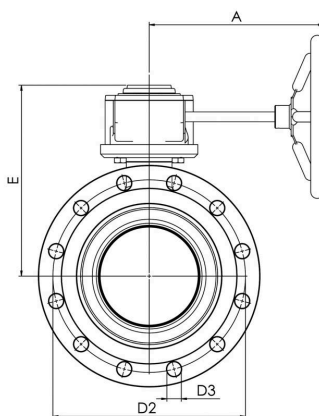


Podmienky použitia / Operation conditions

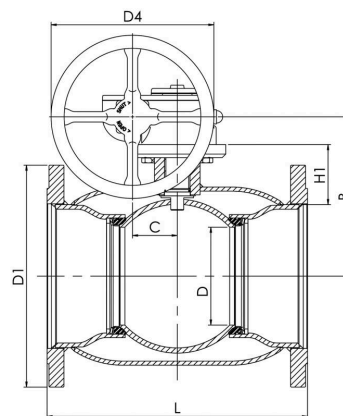
-40 °C – +70 °C
cez / over 70 °C, pod / below
-30°C kontaktovať výrobcu /
contact manufacturer
Trieda tesnosti / Leakage rate A
(EN 12266-1)



DN 100-600



DN 100-600



Neplatí pre paru / Not for steam

| DN | PN | Typové číslo / Product no. | A | B | C | D | D1 | D2 | D3 | D4 | E | H1 | L | kg |
|-----|----|----------------------------|-----|-----|-----|-----|-------|-------|------|-------|-----|-----|------|--------|
| 100 | 25 | 114101/25 | 186 | 206 | 53 | 80 | 235.0 | 190.0 | 22.0 | 125.0 | 248 | 114 | 300 | 26.0 |
| 125 | 25 | 114126/25 | 224 | 216 | 53 | 100 | 270.0 | 220.0 | 26.0 | 200.0 | 258 | 112 | 325 | 35.0 |
| 150 | 25 | 114151/25 | 224 | 236 | 53 | 125 | 300.0 | 250.0 | 26.0 | 200.0 | 279 | 118 | 350 | 44.0 |
| 200 | 25 | 114201/25 | 268 | 244 | 69 | 150 | 360.0 | 310.0 | 26.0 | 250.0 | 293 | 92 | 400 | 78.0 |
| 250 | 25 | 114251/25 | 301 | 294 | 97 | 200 | 425.0 | 370.0 | 30.0 | 300.0 | 345 | 108 | 500 | 134.0 |
| 300 | 25 | 114301/25 | 363 | 343 | 118 | 250 | 485.0 | 430.0 | 30.0 | 500.0 | 412 | 115 | 500 | 205.0 |
| 350 | 25 | 114351/25 | 363 | 418 | 118 | 290 | 555.0 | 490.0 | 33.0 | 500.0 | 487 | 192 | 706 | 295.0 |
| 400 | 25 | 114401/25 | 444 | 500 | 138 | 340 | 620.0 | 550.0 | 36.0 | 500.0 | 573 | 242 | 810 | 408.0 |
| 500 | 25 | 114501/25 | 475 | 576 | 180 | 390 | 730.0 | 660.0 | 36.0 | 500.0 | 648 | 259 | 978 | 640.0 |
| 600 | 25 | 114601/25 | 475 | 643 | 180 | 489 | 845.0 | 770.0 | 39.0 | 500.0 | 714 | 260 | 1130 | 1280.0 |

Plynové guľové kohúty/Gas ball valves

PN 25, konce príruba /príruba / flange / flange, DN 700-800, redukovaný prietok / reduced bore

Teleso/Body DN 700-800 Oceľ / Steel, P355 NL1 (1.0566) / GP240GH (1.0619)

Guľa/Ball DN 700-800 Oceľ / Steel + nerez povlak / stainless plating, ASTM A350 LF2+NI

Sedlo/Ball seal DN 700-800 PTFE+C

Vretno/Stem DN 700-800 Nerez oceľ / Stainless steel, X8CrNiS18-9 (1.4305)

Tesnenie vretena/Stem seal DN 700-800 NBR

Ovládanie/Operation DN 700-800 ručný prevod / manual gear

Príruby/Flanges EN 1092-1

Dostupné / Available PN 10, 16, 25, 40

Výbava/Equipment DN 700-800 vybavený montážnym stojanom a zdvíhacími okakmi / equipped with mounting stand, lifting lugs



Podmienky použitia/ Operation conditions

-40 °C – +70 °C

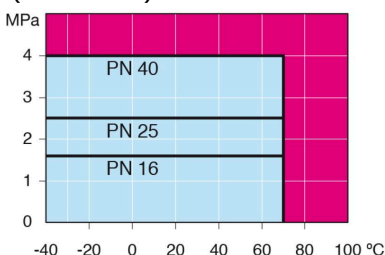
cez / over 70 °C, pod / below

-30°C kontaktovať výrobcu /

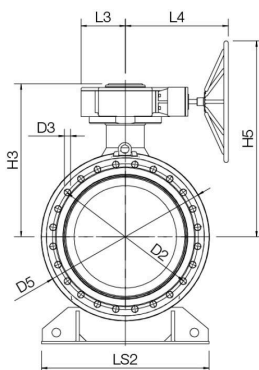
contact manufacturer

Trieda tesnosti / Leakage rate A

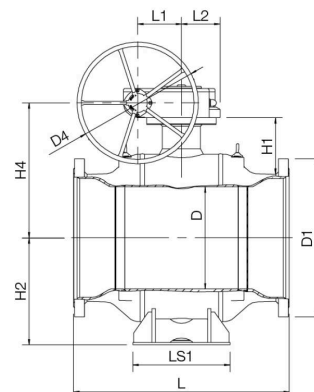
(EN 12266-1)



DN 700-800



DN 700-800



Neplatí pre paru / Not for steam

| Product no. | | Typové číslo | D | D1 | D2 | D3 | D4 | D5 | H1 | H2 | H3 | H4 | H5 | L | L1 | L2 | L3 | L4 | LS1 | LS2 | kg |
|-------------|----|--------------|-----|--------|-------|------|-------|--------|-----|-----|-----|-----|------|------|-----|-----|-----|-----|-----|------|--------|
| DN | PN | | | | | | | | | | | | | | | | | | | | |
| 700 | 25 | 114701/25 | 589 | 960.0 | 875.0 | 42.0 | 700.0 | 965.0 | 325 | 616 | 881 | 778 | 1128 | 1245 | 253 | 222 | 255 | 593 | 560 | 965 | 3100.0 |
| 800 | 25 | 114801/25 | 684 | 1085.0 | 990.0 | 48.0 | 700.0 | 1125.0 | 358 | 694 | 961 | 858 | 1208 | 1427 | 253 | 222 | 255 | 593 | 700 | 1028 | 4400.0 |