

Plynové guľové kohúty / Gas ball valves

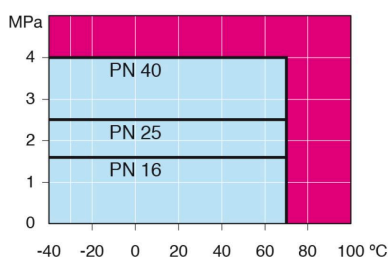
konce vnútorný závit / vnútorný závit / female threads / female threads, DN 15-50, redukovaný prieto k / reduced bore

Teleso/Body	DN 15-50 Ocel' / Steel, P235GH (1.0345)
Guľa/Ball	DN 15-50 Nerez ocel' / Stainless steel, X5CrNi18-10 (1.4301)
Sedlo/Ball seal	DN 15-50 PTFE+C
Vretno/Stem	DN 15-50 Nerez ocel' / Stainless steel, X8CrNiS18-9 (1.4305)
Tesnenie vretena/Stem seal	DN 15-50 NBR
Ovládanie/Operation	DN 15-50 páka pozinkovaná ocel' / zinc-plated steel handle

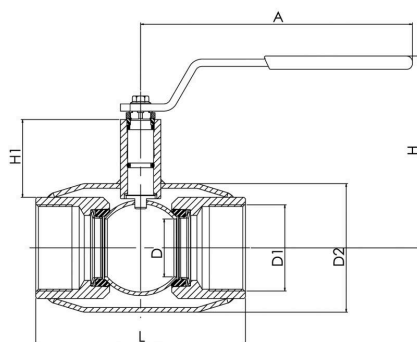


Podmienky použitia / Operation conditions

-40 °C – +70 °C
cez / over 70 °C, pod / below
-30°C kontaktovať výrobcu /
contact manufacturer
Trieda tesnosti / Leakage rate A
(EN 12266-1)



DN 15-50



Neplatí pre paru / Not for steam

DN	PN	Typové číslo / Product no.	A	D	D1	D2	H	H1	L	kg
15	40	112015	145	10	R 1/2	33.7	98	22	85	0.5
20	40	112020	145	15	R 3/4	42.4	103	23	100	0.6
25	40	112025	145	20	R 1	48.3	118	34	115	1.0
32	40	112032	145	25	R 1 1/4	60.3	121	33	130	1.2
40	40	112040	188	32	R 1 1/2	70.0	120	43	150	1.8
50	40	112050	188	40	R 2	88.9	127	44	180	2.3