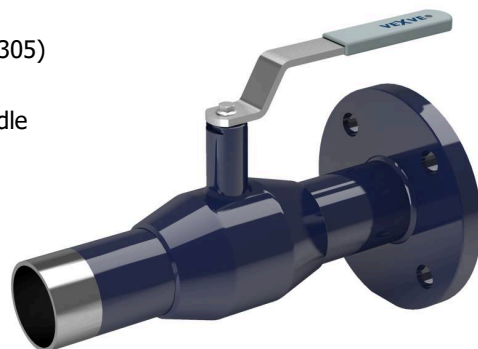


# Oceľové guľové kohúty / Steel ball valves

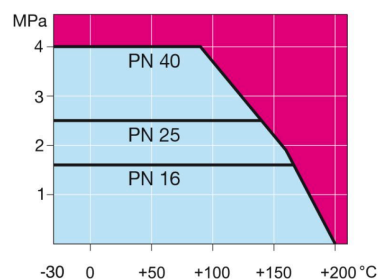
konce privarovanie / príruha / flange / welding, EN (DIN), DN 15-300, redukovaný prietok / reduced bore

Teleso/Body	DN 15-300 Oceľ / Steel, P235GH (1.0345)
Guľa/Ball	DN 15-300 Nerez oceľ / Stainless steel, X5CrNi18-10 (1.4301)
Sedlo/Ball seal	DN 15-300 PTFE+C
Vreťeno/Stem	DN 15-300 Nerez oceľ / Stainless steel, X8CrNiS18-9 (1.4305)
Tesnenie vreťena/Stem seal	DN 15-300 FPM
Ovládanie/Operation	DN 15-250 páka pozinkovaná oceľ / zinc-plated steel handle DN 300 Bez páky / Without handle
Prírubby/Flanges	EN 1092-1 Dostupné / Available PN 10, 16, 25, 40

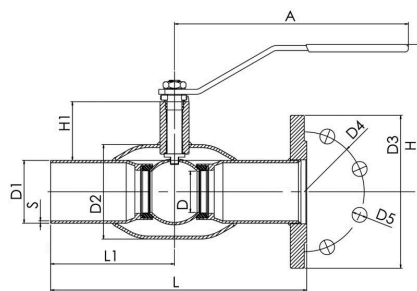


## Podmienky použitia / Operation conditions

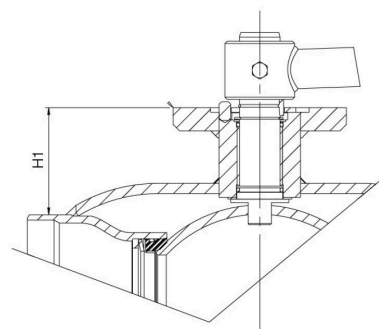
-30 °C – +200 °C Pod / Below 0 °C  
kontaktovať výrobcu / contact manufacturer  
Trieda tesnosti / Leakage rate A (EN 12266-1)



DN 10-150



DN 200-300



Neplatí pre paru / Not for steam

DN	PN	Typové číslo / Product no.	A	D	D1	D2	D3	D4	D5	H	H1	L	L1	S	kg
15	40	105015	145	10	21.3	33.7	95.0	65.0	14.0	98	22	240	115	2	1.2
20	40	105020	145	15	26.9	42.4	105.0	75.0	14.0	103	23	240	115	2.3	1.7
25	40	105025	145	20	33.7	48.3	115.0	85.0	14.0	118	34	240	115	2.6	2.2
32	40	105032	145	25	42.4	60.3	140.0	100.0	18.0	121	33	270	130	2.6	3.3
40	40	105040	188	32	48.3	70.0	150.0	110.0	18.0	121	43	270	130	2.6	4.0
50	40	105050	188	40	60.3	88.9	165.0	125.0	18.0	128	44	310	150	2.9	5.5
65	16	105065	278	50	76.1	101.6	185.0	145.0	18.0	157	62	310	150	2.9	7.4
80	16	105080	278	65	88.9	121.0	200.0	160.0	18.0	170	68	310	150	3.2	9.1
100	16	105100	279	80	114.3	146.0	220.0	180.0	18.0	216	101	340	163	3.6	12.5
125	16	105125	400	100	139.7	177.8	250.0	210.0	18.0	251	101	340	163	4	19.0
150	16	105150	600	125	168.3	219.1	285.0	240.0	22.0	272	107	360	175	4.5	26.0
200	16	105200	870	150	219.1	273.0	340.0	295.0	22.0	282	92	415	200	4.5	49.0
250	16	105250	1200	200	273.0	355.6	405.0	355.0	26.0	350	108	540	265	5	88.0
300	16	105300		250	323.9	457.0	460.0	410.0	26.0		133	560	277.8	5.6	129.0