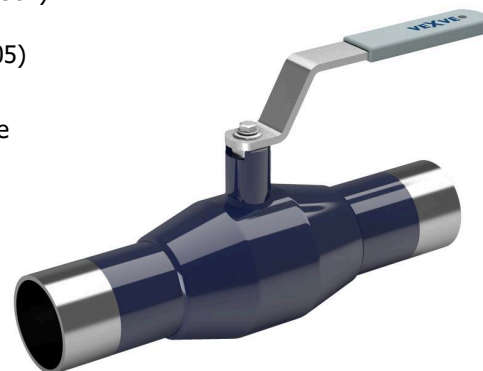


Oceľové guľové kohúty / Steel ball valves

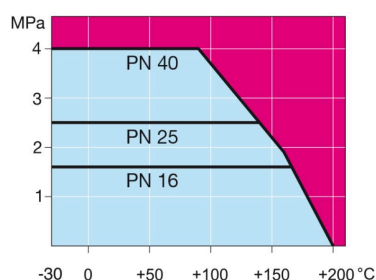
konce privarovacie / privarovacie / welding / welding, EN (DIN), DN 10-250, redukovaný prietok / reduced bore

Teleso/Body	DN 10-250 Oceľ / Steel, P235GH (1.0345)
Guľa/Ball	DN 10-250 Nerez oceľ / Stainless steel, X5CrNi18-10 (1.4301)
Sedlo/Ball seal	DN 10-250 PTFE+C
Vreťeno/Stem	DN 10-250 Nerez oceľ / Stainless steel, X8CrNiS18-9 (1.4305)
Tesnenie vreťena/Stem seal	DN 10-250 FPM
Ovládanie/Operation	DN 10-250 páka pozinkovaná oceľ / zinc-plated steel handle

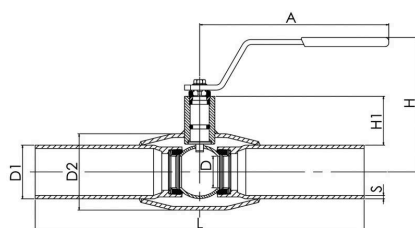


Podmienky použitia / Operation conditions

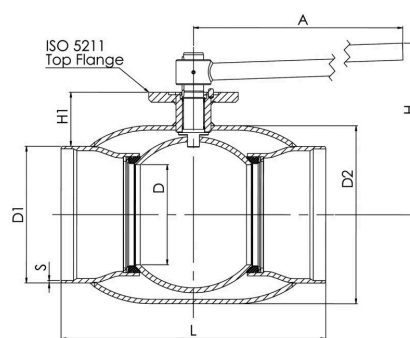
-30 °C – +200 °C Pod / Below 0 °C
kontaktovať výrobcu / contact manufacturer
Trieda tesnosti / Leakage rate A (EN 12266-1)



DN 10-150



DN 200-250



Neplatí pre paru / Not for steam

DN	PN	Typové číslo / Product no.	A	D	D1	D2	H	H1	L	S	kg
10	40	100010	145	10	17.2	33.7	98	22	230	2	0.6
15	40	100015	145	10	21.3	33.7	98	22	230	2	0.6
20	40	100020	145	15	26.9	42.4	103	23	230	2,3	0.8
25	40	100025	145	20	33.7	48.3	118	34	230	2,6	1.0
32	40	100032	145	25	42.4	60.3	121	33	260	2,6	1.4
40	40	100040	188	32	48.3	70.0	120	43	260	2,6	1.8
50	40	100050	188	40	60.3	88.9	127	44	300	2,9	2.6
65	25	100065	277,5	50	76.1	101.6	159	62	300	2,9	4.0
80	25	100080	277,5	65	88.9	121.0	171	68	300	3,2	5.3
100	25	100100	278,5	80	114.3	146.0	218	101	325	3,6	8.3
125	25	100125	400	100	139.7	177.8	252	101	325	4	13.4
150	25	100150	600	125	168.3	219.1	272	107	350	4,5	18.0
200	25	100200	870	150	219.1	273.0	280	92	400	4.5	39.0
250	25	100250	1200	200	273.0	355.6	350	108	530	5	74.0

Oceľové guľové kohúty / Steel ball valves

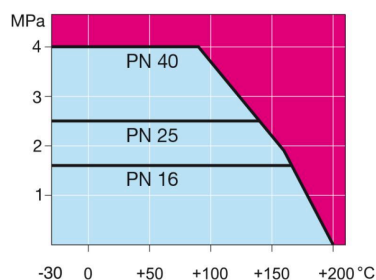
konce privarovacie / privarovacie / welding / welding, EN (DIN), DN 300-600, redukovaný prietok / reduced bore

Teleso/Body	DN 300-500 Oceľ / Steel, P235GH (1.0345) DN 600 Oceľ / Steel, P355 NL1 (1.0566)/ GP240GH (1.0619)
Guľa/Ball	DN 300-600 Nerezová oceľ / Stainless steel, X5CrNi18-10 (1.4301)
Sedlo/Ball seal	DN 300-600 PTFE+C
Vretno/Stem	DN 300-600 Nerezová oceľ / Stainless steel, X8CrNiS18-9 (1.4305)
Tesnenie vretena/Stem seal	DN 300-600 FPM
Ovládanie/Operation	DN 300-600 dostupné len s ručným prevodom alebo elektropohonom, pneupohonom alebo hydraulickým pohonom / available with manual gear or with an electric or hydraulic actuator

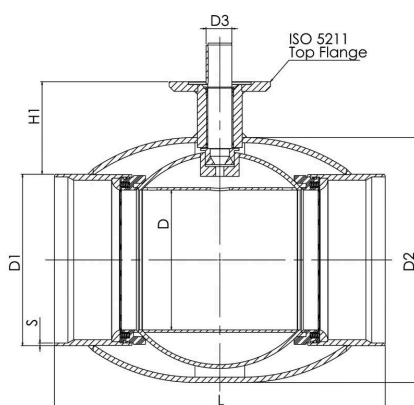


Podmienky použitia / Operation conditions

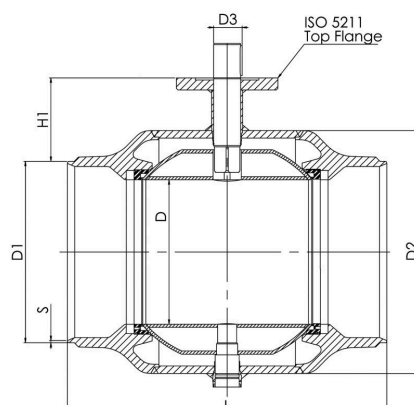
-30 °C – +200 °C Pod / Below 0 °C
kontaktovať výrobcu / contact manufacturer
Trieda tesnosti / Leakage rate A (EN 12266-1)



DN 300-500



DN 600



Neplatí pre paru / Not for steam

DN	PN	Typové číslo / Product no.	D	D1	D2	D3	H1	L	S	kg
300	25	100300	250	323.9	457.0	50.0	133	550	5.6	110.0
350	25	100350	290	355.6	508.0	50.0	192	686	6,3	170.0
400	25	100400	340	406.4	610.0	70.0	242	762	7,0	250.0
500	25	100500	390	508.0	660.0	90.0	259	914	7,0	400.0
600	25	100600	489	610.0	813.0	90.0	274	1065	7.1	997.0

Oceľové guľové kohúty / Steel ball valves

konce privarovacie / privarovacie / welding / welding, EN (DIN), DN 700-800, redukovaný prietok / reduced bore

Teleso/Body DN 700-800 Oceľ / Steel, P355 NL1 (1.0566)/ GP240GH (1.0619)

Guľa/Ball DN 700-800 Oceľ / Steel + nerezový povlak / stainless plating, ASTM A350 LF2+Ni

Sedlo/Ball seal DN 700-800 PTFE+C

Vretno/Stem DN 700-800 Nerez oceľ / Stainless steel, X8CrNiS18-9 (1.4305)

Tesnenie vretena/Stem seal DN 700-800 FPM

Ovládanie/Operation DN 700-800 dostupné len s ručným prevodom alebo elektropohonom, pneupohonom alebo hydraulickým pohonom / alves are available with manual gear or with an electric or hydraulic actuator

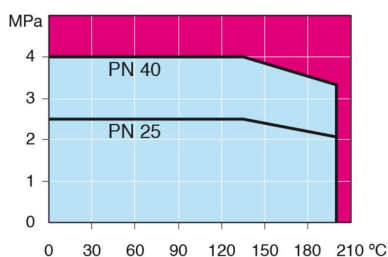
Výbava/Equipment DN 700-800 vybavený vypúšťacím ventilom, montážnym stojanom a zdvíhačmi okami / are equipped with drain valve, mounting stand, lifting lugs



Podmienky použitia / Operation conditions

- +200 °C Pod / Below 0 °C
kontaktovať výrobcu / contact
manufacturer Trieda tesnosti /
Leakage rate A (EN 12266-1)

-30 °C

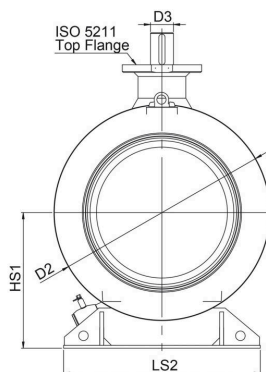


Neplatí pre paru / Not for steam

DN	PN	Product no. Vexve	D	D1	D2	D3	H1	H2	HS1	L	LS1	LS2	S	kg
700	25	100700	589	711.0	965.0	100.0	336	592	616	1205	560	965	8	2500.0
800	25	100800	684	813.0	1125.0	120.0	365	684	709	1330	700	1028	8.8	3650.0

*DN 700-800 tiež dostupné v PN40 / also available in PN40. Pre viac informácií nás prosím kontaktujte. / For more information please contact us.

DN 700-800



DN 700-800

